



T&S BRASS AND BRONZE WORKS, INC.

2 Saddleback Cove / P.O. Box 1088
Travelers Rest, SC 29690

Model No.

B-0273

Item No.

Travelers Rest, SC: 800-476-4103 • Simi Valley, CA: 800-423-0150 • Fax: 864-834-3518 • www.tsbrass.com

This Space for Architect/Engineer Approval

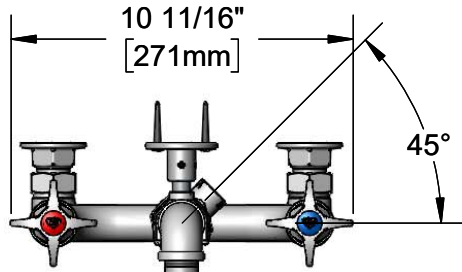
Job Name _____ Date _____

Model Specified _____ Quantity _____

Customer/Wholesaler _____

Contractor _____

Architect/Engineer _____



3/4" I.D. x 10' White Creamery Hose

360° Swivel Quick Disconnect. Remove Water Gun for Full Flow Mop Bucket Fill Up.

MV-2516-24 Stainless Steel Rear Trigger Water Gun, 5/16" Orifice

Wall Bracket

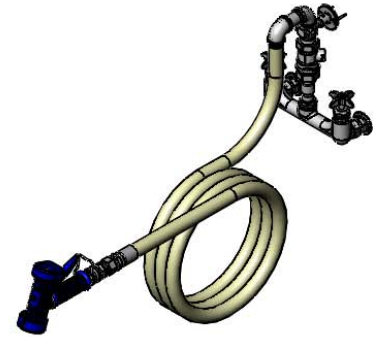
B-0962 Continuous Pressure Backflow Preventer (45° Toward Rear of Unit)

Big-Flo Cartridges & 4-Arm Handles w/ Color Coded Indexes

4 1/8" [105mm]

8" [203mm]
Adjustable From 7 3/4" to 8 1/4" [197mm to 210mm]

Ø 2" [51mm] Flanges w/ 3/4" NPT Female Inlets



Mounting Surface

3 3/4" [95mm]

2 1/2" [64mm]

11 3/8" [289mm]

Faucet Body w/ Integral Check Valves

Product Specifications:

8" Wall Mount Big-Flo Mixing Faucet, 4-Arm Handles, Backflow Preventer, Wall Bracket, 10' White Creamery Hose, Quick Disconnect, Rear Trigger Water Gun, Integral Check Valves & 3/4" NPT Female Inlets

Product Compliance:

ASME A112.18.1 / CSA B125.1
NSF 61 Exempt (Non-Potable)
ASSE 1012 (VB)



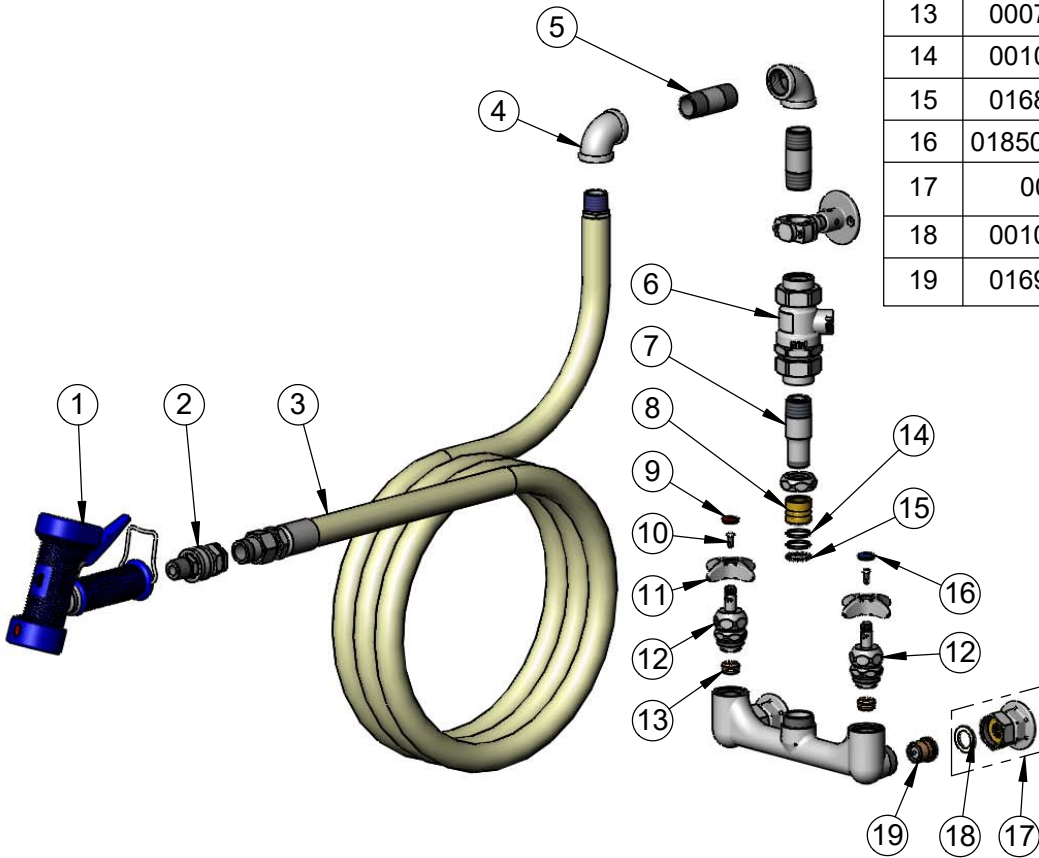
T&S BRASS AND BRONZE WORKS, INC.
 2 Saddleback Cove / P.O. Box 1088
 Travelers Rest, SC 29690

Model No.
B-0273

Item No.

Travelers Rest, SC: 800-476-4103 • Simi Valley, CA: 800-423-0150 • Fax: 864-834-3518 • www.tsbrass.com

ITEM NO.	SALES NO.	DESCRIPTION
1	MV-2516-24	Stainless Steel Rear Trigger Water Gun, 5/16" Orifice
2	B-0273-QD	1/2" NPT Washdown Quick Disconnect
3	014034-45	3/4" I.D. x 10' White Creamery Hose
4	001720-40	3/4" NPT Elbow
5	004525-40	3/4" NPT x 2 1/2" Nipple
6	B-0962	3/4" NPT Continuous Pressure Backflow Preventer
7	016808-40	Big-Flo EasyInstall Add-on Faucet Nipple
8	000847-20	Big-Flo Swivel Piece
9	001193-19NS	Red Button Index, Press-in
10	000925-45	Lab Handle Screw
11	002521-45NS	4-Arm Handle (New Style)
12	006482-40NS	Big-Flo Cartridge, RTC
13	000764-20	Seat, Big-Flo
14	001068-45	O-ring
15	016807-45	Serrated Lock Washer
16	018506-19NS	Blue Button Index, Press-in
17	00BB	3/4" NPT Female Eccentric Flange
18	001019-45	Coupling Nut Washer
19	016902-20	Big-Flo Check Valve



Product Specifications:
 8" Wall Mount Big-Flo Mixing Faucet, 4-Arm Handles, Backflow Preventer, Wall Bracket, 10' White Creamery Hose, Quick Disconnect, Rear Trigger Water Gun, Integral Check Valves & 3/4" NPT Female Inlets

Product Compliance:
 ASME A112.18.1 / CSA B125.1
 NSF 61 Exempt (Non-Potable)
 ASSE 1012 (VB)