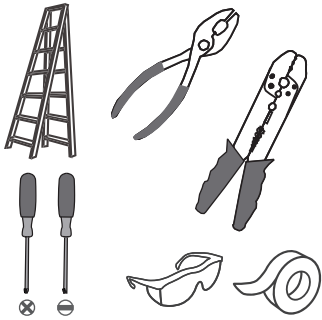
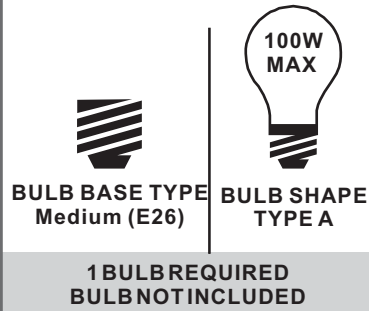


**Tools Required**



**Light Source**



**Warnings and Cautions**

Turn off the electricity at the circuit breaker before installation. Consult a licensed electrician if in doubt about installation.

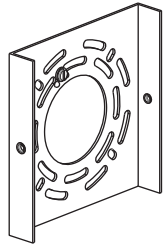
Turn off power to the fixture and allow the bulbs to cool before replacing.

**Package Contents**

**Preparation:** Identify and inspect all parts before beginning the installation.

Missing or damaged parts? Contact your original place of purchase.

**PARTS BAG**



A Inner Backplate x 1



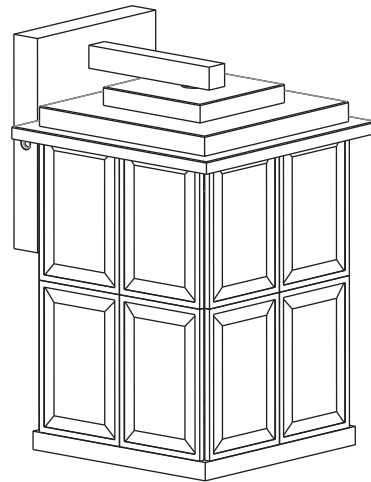
B Mounting Screw x 2



C Outlet Box Screw x 2



D Wire Connector x 3

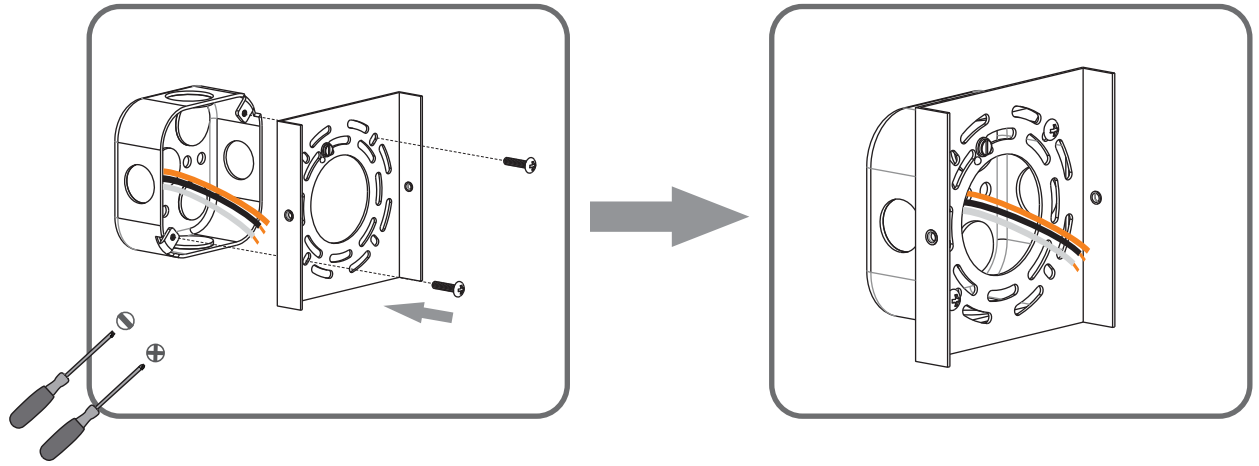


E Fixture Body x 1

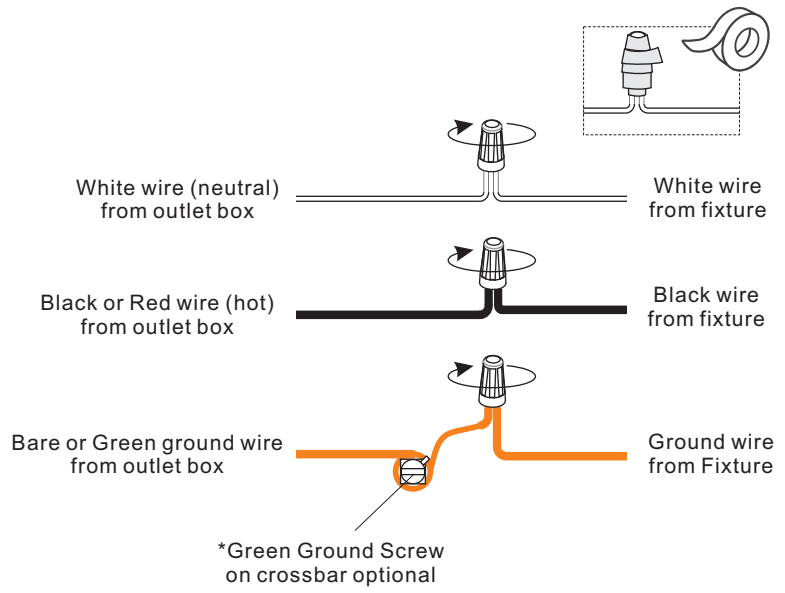
**Table of Contents**

Inner Backplate	Wiring	Fixture Body	Bulb	Caulk
STEP 1	STEP 2	STEP 3	STEP 4	STEP 5

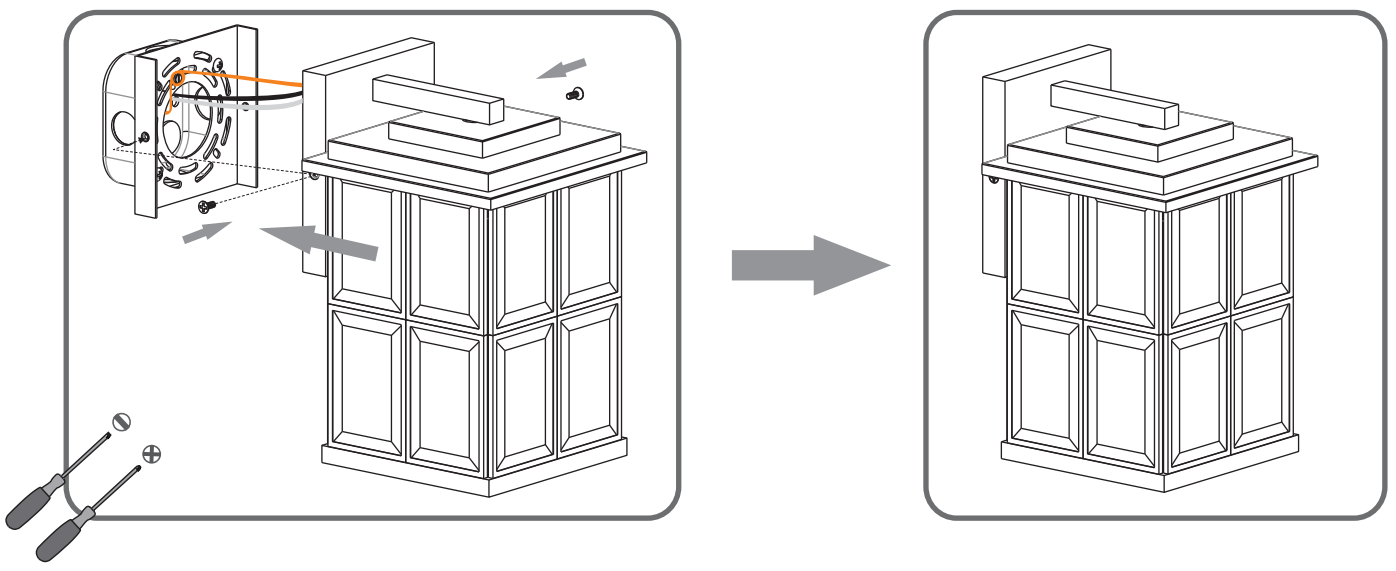
### STEP 1



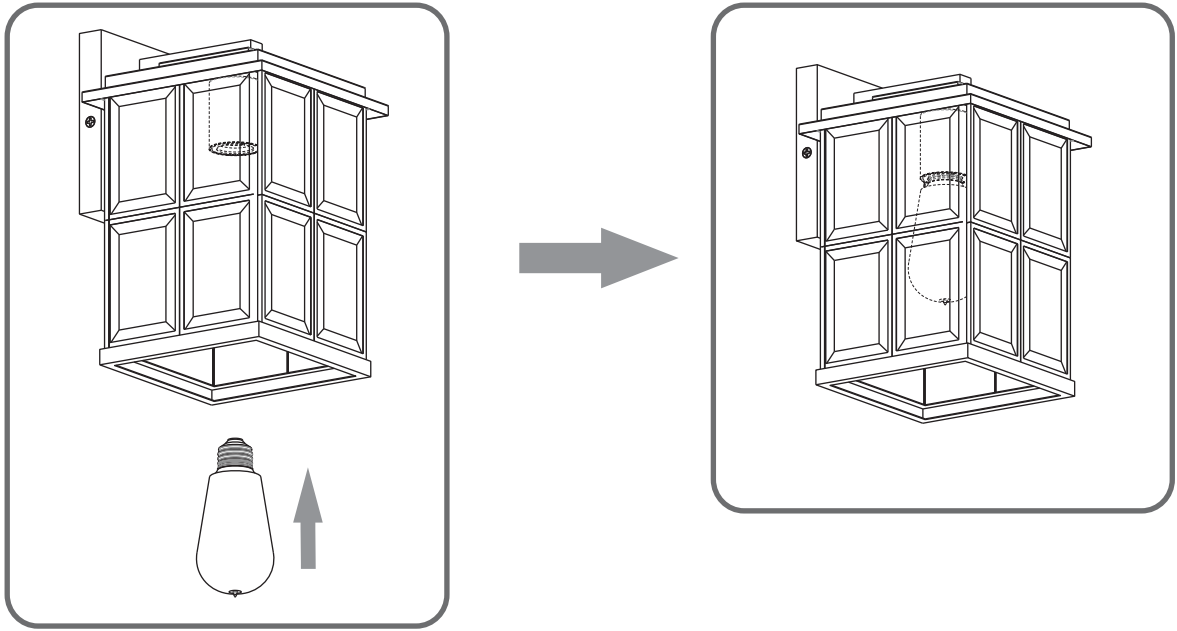
### STEP 2



### STEP 3



**STEP 4**



**STEP 5**

