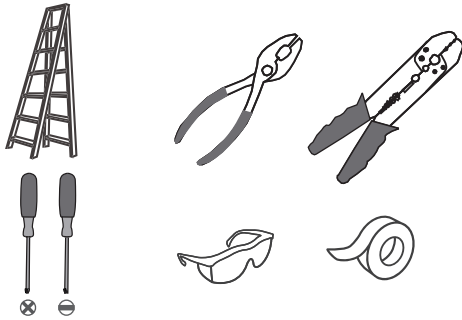
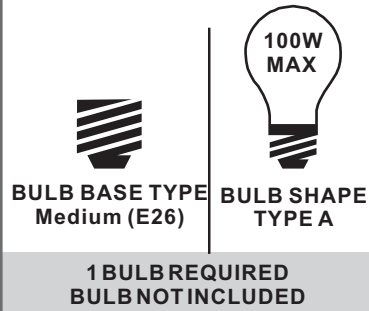


Tools Required



Light Source



Fixture Height Adjustable
11.5" to 47.5"

Warnings and Cautions

Turn off the electricity at the circuit breaker before installation. Consult a licensed electrician if in doubt about installation.

Turn off power to the fixture and allow the bulbs to cool before replacing.

Package Contents

Preparation: Identify and inspect all parts before beginning the installation.

Missing or damaged parts? Contact your original place of purchase.

PARTS BAG



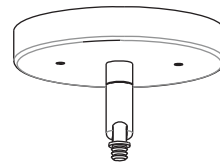
A Crossbar Assembly x 1



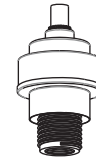
B Outlet Box Screw x 2



C Wire Connector x 3



D Ceiling Canopy x 1



G Socket Assembly x 1



E 6" L Rod x 1



H Shade x 1



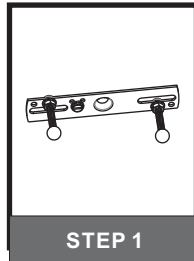
F 12" L Rod x 2



I Socket Collar x 1

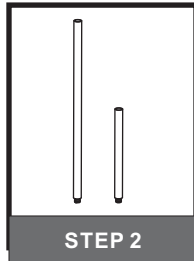
Table of Contents

Crossbar Assembly



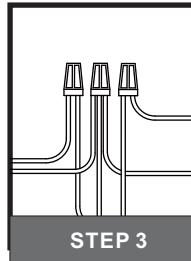
STEP 1

Downrod



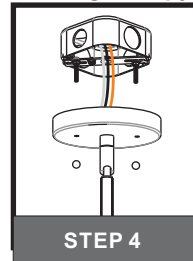
STEP 2

Wiring



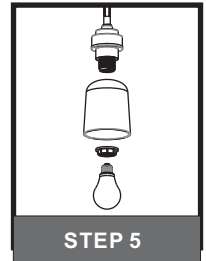
STEP 3

Ceiling Canopy



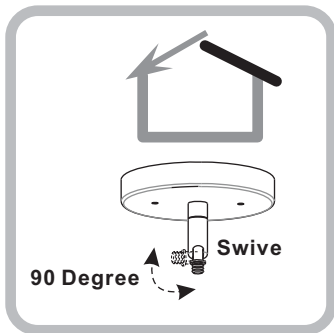
STEP 4

Shade & Bulb



STEP 5

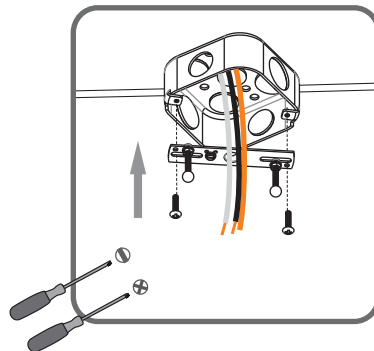
STEP 1



For angled ceilings, Swivel opening towards wall.

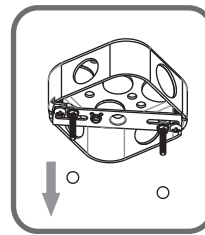
1

Step 1
Install crossbar assembly

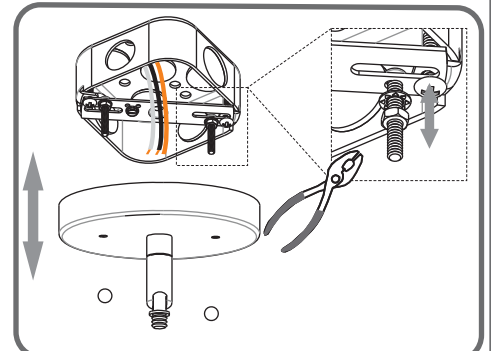


2

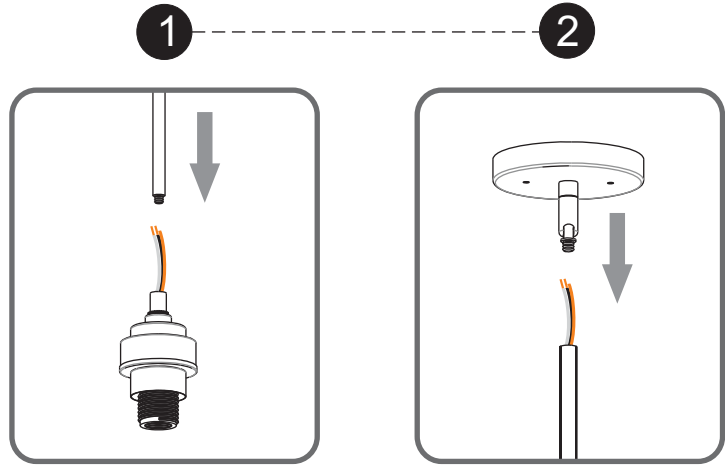
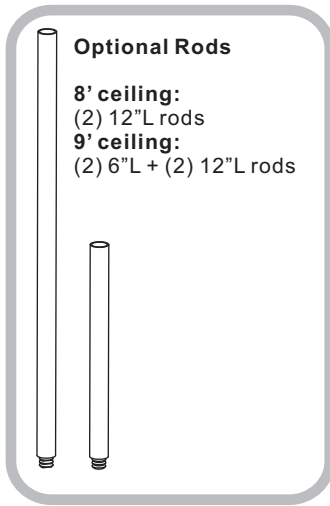
Step 2 - 3
Test fitting ceiling canopy to mounting screws



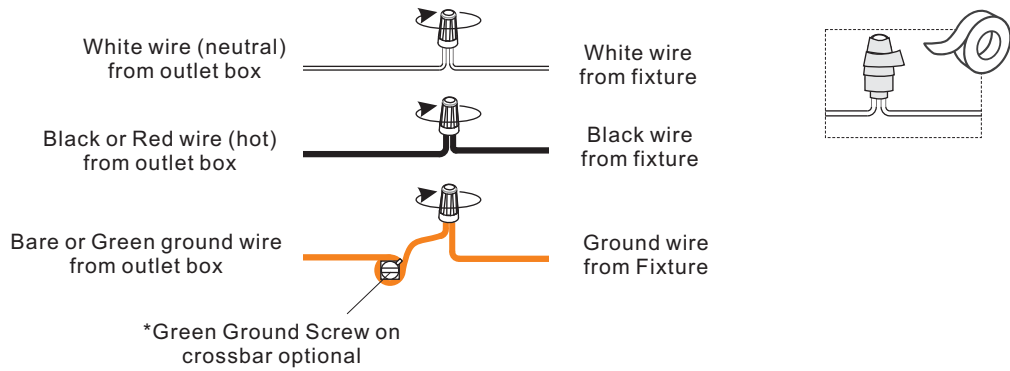
3



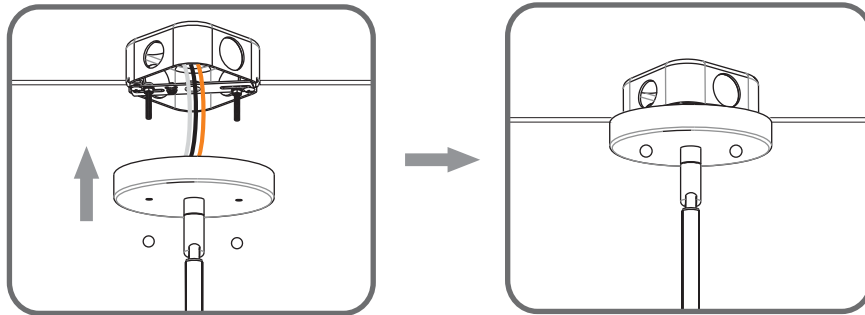
STEP 2



STEP 3



STEP 4



STEP 5

