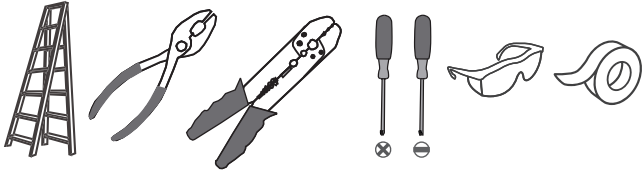


Tools Required



Light Source

12W
LED

Warnings and Cautions

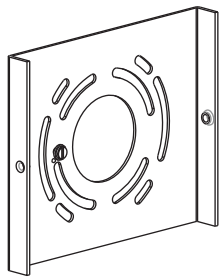
Turn off the electricity at the circuit breaker before installation. Consult a licensed electrician if in doubt about installation.

Package Contents

Preparation: Identify and inspect all parts before beginning the installation.

Missing or damaged parts? Contact your original place of purchase.

PARTS BAG

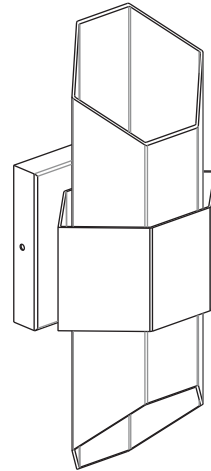


A Inner Backplate
x 1

B Lock Screw
x 2

C Outlet Box Screw
x 2

D Wire Connector
x 3

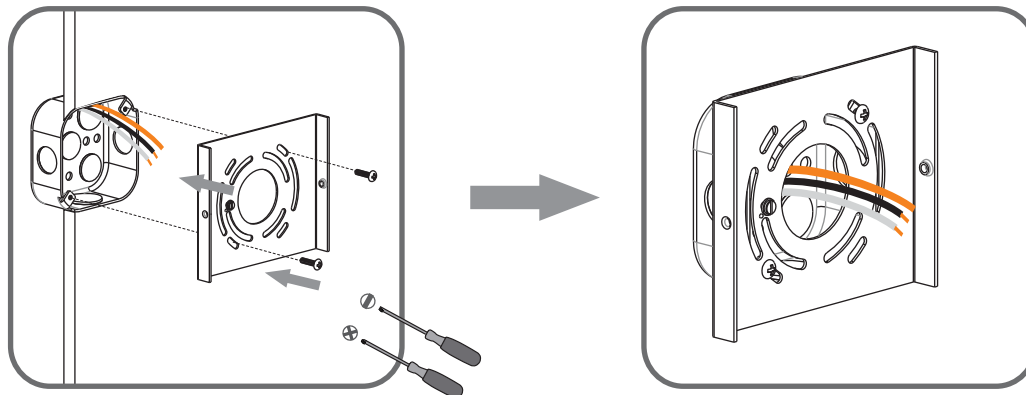


E Fixture Body
x 1

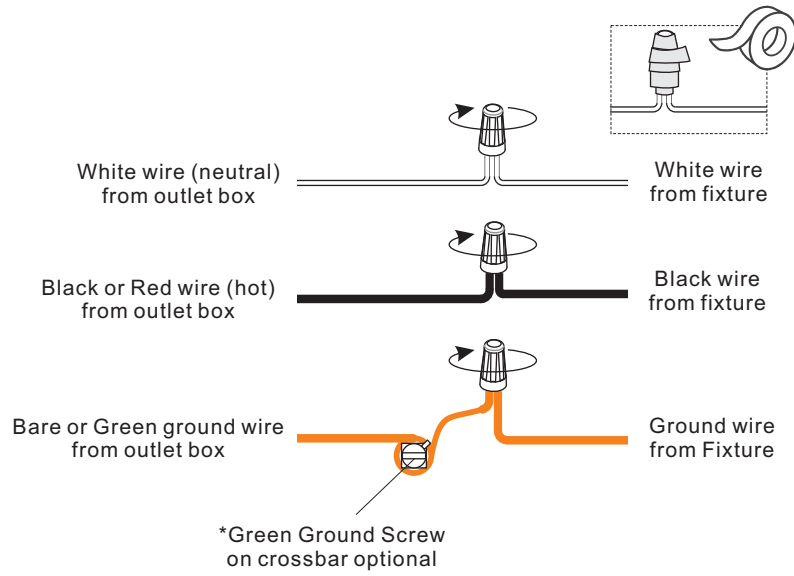
Table of Contents

Inner Backplate	Wiring	Fixture Body	Caulk
STEP 1	STEP 2	STEP 3	STEP 4

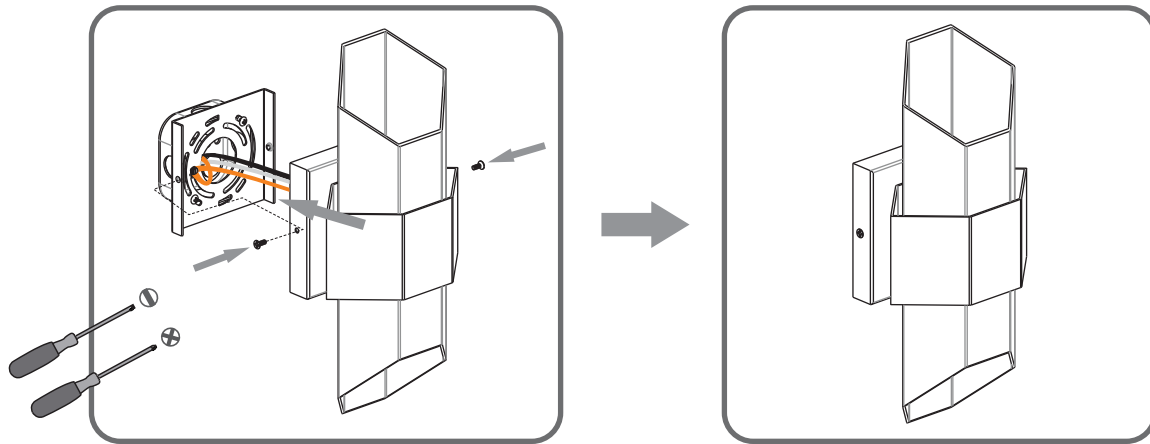
STEP 1



STEP 2



STEP 3



STEP 4

