

# MINI DOUBLE FLANGE

## Recessed Mount Extrusion

The mini double flange is a traditional recessed mount extrusion that features flanged edges that masks the recessed edge making for a clean and modern install. With a slim recessed profile, use when mounting depth may be limited such as cabinet shelving or substrates when deeper recessed extrusions will not work.

- Perfect option for new construction or remodel applications
- Slim recessed profile perfect for applications with limited depth
- Frosted lens protects light source while evenly diffusing light
- Anodized aluminum provides excellent heat dissipation
- Field cuttable extrusion and lens
- Compatible with 0.47" / 12mm thick drywall

### Available Finishes



Anodized Aluminum



Black (Special Order)

### Compatible Tape Light

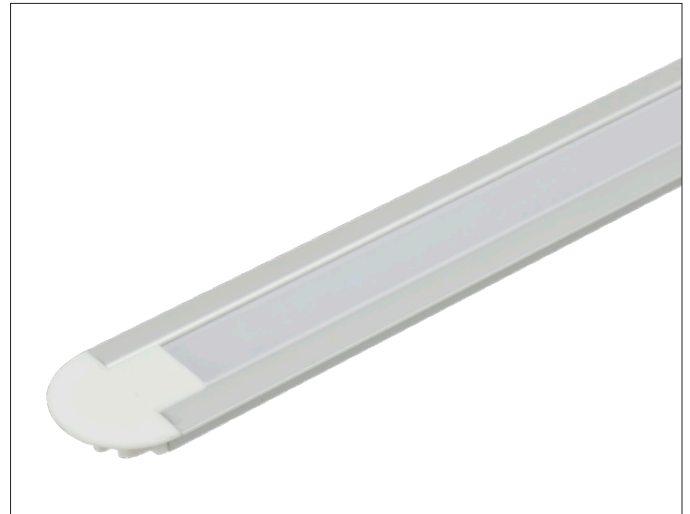
- Single Color (10mm)
- Tunable CCT (10mm)
- RGB (10mm)

PROJECT:

TYPE:

LOCATION:

CATALOG NUMBER:

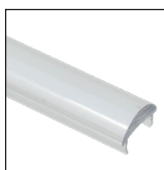


### MINI DOUBLE FLANGE ORDERING INFORMATION

ITEM NUMBER	DESCRIPTION
PE-AA1DF-1M	1M Mini Double Flange Aluminum Extrusion
PE-UVLENS-1M	1M Frosted Polycarbonate UV Lens
PE-FOCLENS-1M	10° Focusing Lens
PE-AA1DF-END	Mini Double Flange End Cap

Mini Double Flange Extrusion is available as special order only  
Please allow up to 2 weeks for order processing

### MINI DOUBLE FLANGE ACCESSORIES



PE-FOCLENS-1M

### MINI DOUBLE FLANGE DIMENSIONS

